



# PRINT

ON DEMAND  
SYSTEMS

PANOTEC

**PANOTEC®**

## PRINT SYSTEMS

Panotec, a trailblazer in the field of research and development, has crossed a new boundary by implementing the first printing system in the world able to challenge the laws of gravity.

The patented Print on Demand system is unique to the market as it can print from the bottom up, allowing for ever-changing prints on the outside of the box.

This innovative printing system is compatible exclusively with Panotec packaging machines.



### Improving Customer Satisfaction

The packaging is the first thing a customer notices when receiving a product. Which is why a company seeking to enhance its customers' shopping experience should not neglect packaging.



### Branding Tool

Customised packaging design is the most effective solution to promote the brand perception and the image of the company, as the first direct contact with the customer is made via the packaging.



### Added Value

Customising the box with an image of the goods inside or with promotional messages printed on the outside will increase the communicated value of your goods.

# POD

A unique HD Print System

PRINT ON DEMAND is a modular system to print images, logos, lettering, symbols, barcodes, etc. in HD on the outside of the box.



The POD integrates flawlessly with Panotec packaging machines: this inline solution makes it possible to produce and high-definition print boxes in a wide range of sizes. All this without the need to involve an operator in the different stages.

## TYPE OF PRINTINGS

**Logos, barcodes, labels and much more**

This system prints barcodes, numbers, images, symbols, shipping labels on the outside of the box. It is also possible to print labels managing variable fields (sender, address, tracking number, etc.).



## AXES AND POD PRINT UNIT SETUP

### Setup of the Print Unit

It can be set up with 1 or 2 transversal axes and can support the following printing units:

- 70 mm (512 px) - 140 mm (1024 px)
- 210 mm (1536 px) - 280 mm (2048 px)

### Colours

max. 1 colour per printing unit, max. 4 colours in total

### No. of printheads

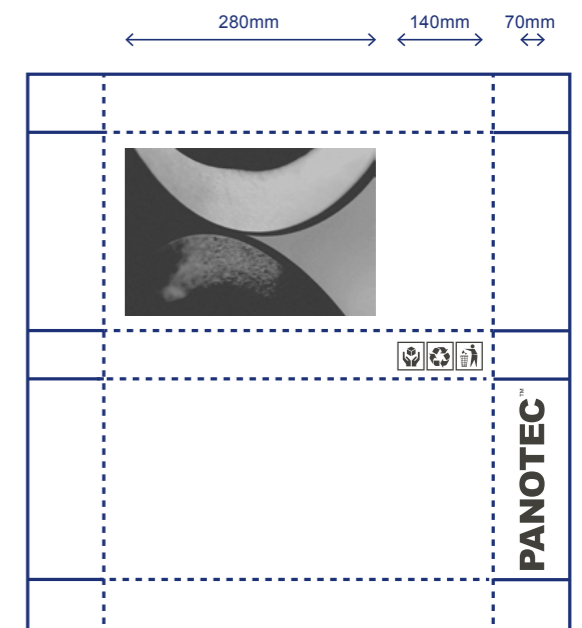
A maximum of 2 printheads per axis with 2 different types of colour

## PRINT MANAGEMENT SOFTWARE

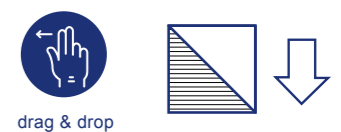
Images can be moved to the required position with the drag & drop function. The image management features also include a preview pane and an editing tool for variable fields.

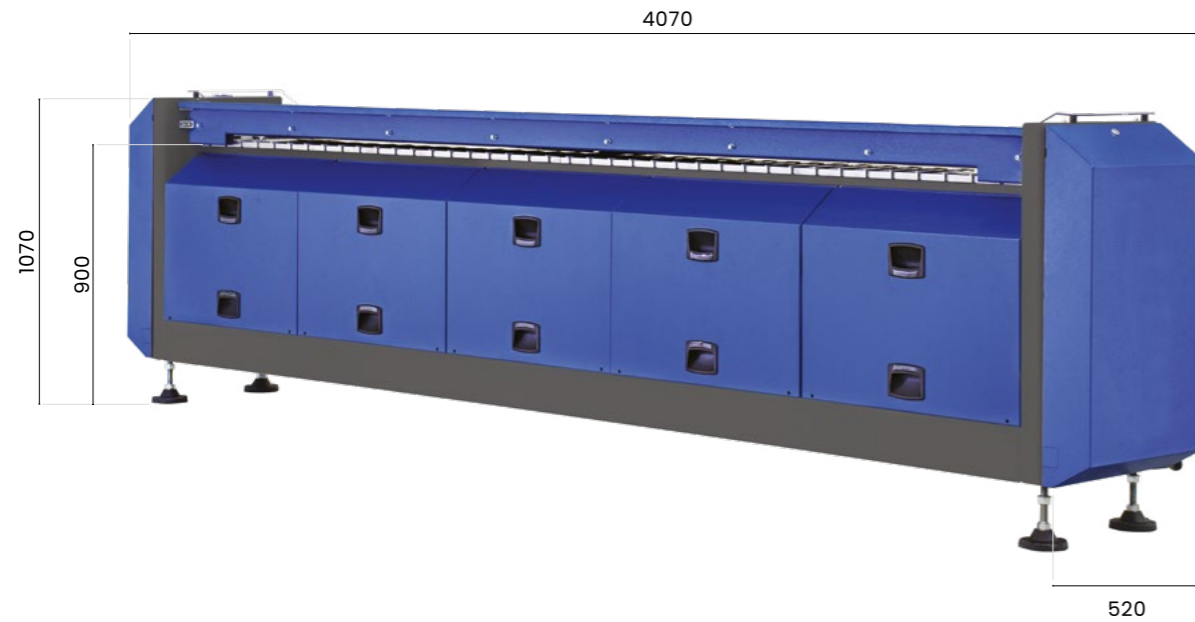
The newly designed packaging and print can be saved in the archive so that they can be used again. The image can also be converted into the format required by the machine (.bmp monochrome and dithering) with the BOXLINK™ programme.

The printing of several images in different positions can be assigned to the same unit: once the printing of one image has been completed, the unit resets to start printing the next image.



examples of prints on boxes





DIPOD overall size for Evo 2.5

## POD TECHNICAL FEATURES

<b>Number of axis</b>	1 - 2
<b>Number of units that can be tooled for printing</b>	up to 2 for each transversal axis (max. 4 on one station)
<b>Printhead width</b>	70 / 140 / 210 / 280 mm
<b>Print definition</b>	180 Dpi
<b>Ink</b>	oil based, quick dry
<b>Colour</b>	standard: black other colours upon request
<b>Automatic cleaning of printheads</b>	non available
<b>Print Management Images</b>	the same unit can print more than one image, by re-setting itself automatically after completing one printing
<b>Cardboard feeding speed</b>	single ink jet, low colour saturation: up to 30 m / min double inkjet, high colour saturation: up to 15 m/min
<b>Unit set-up speed</b>	up to 300 mm / sec
<b>Length of image</b>	max 3000 mm
<b>Printable box surface area</b>	390 mm not printable on the backend
<b>Compatible packaging machines</b>	New Compack, New Midi, Evo, Nextpro



# DI-POD

The technological evolution of custom printing



Based on Print On Demand technology, the latest generation of the DI-POD printing system has two outstanding features:

- **AUTOMATIC CLEANING OF PRINT HEADS**  
It features an advanced self-cleaning system that keeps the print heads permanently clean of dust and ink, thus ensuring their proper functioning at all times and increasing their service life. The automatic cleaning system is split into 200 cleaning cycles per printing unit (reel length 40m) and each cycle lasts approximately 5 seconds.
- **POWERED BOX INFEED AND OUTFEED UNIT**  
The system features a double drive system for both box infeed and outfeed, thus ensuring that the box exits the machine smoothly and easily. This feature allows printing on boxes that are shorter than 600mm (min 420mm) and printing on the rear ends of the box.

## TYPE OF PRINTINGS

### Logos, barcodes, labels and much more

This system prints barcodes, numbers, images, symbols, shipping labels on the outside of the box.

It is also possible to print labels managing variable fields (sender, address, tracking number, etc.).



## AXES AND DIPOD PRINTING UNIT SETUP

### Setup of the Print Unit

It can be set up with 2 transversal axes and can support the following printing units:

- 140 mm (1024 px) - 280 mm (2048 px)

### Colours

max. 1 colour per printing unit, max. 4 colours in total

### No. of printheads

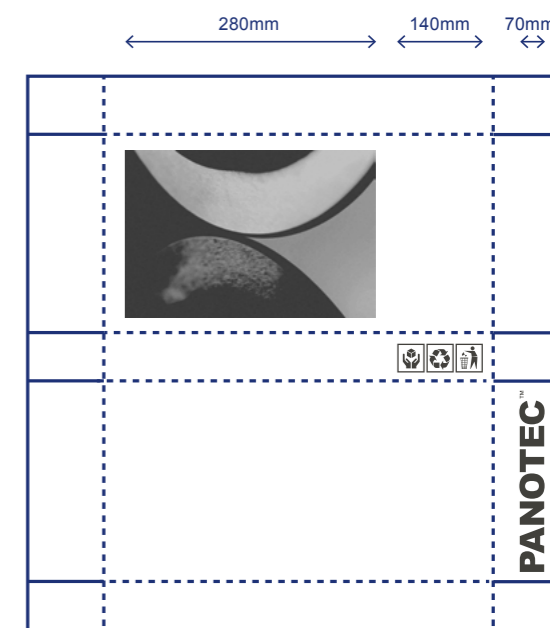
A maximum of 2 printheads per axis with 2 different types of colour

## PRINT MANAGEMENT SOFTWARE

Images can be positioned by drag & drop. The image management features also include a preview pane and an editing tool for variable fields.

The newly designed packaging and print can be saved in the archive so that they can be used again in the future. The image can also be converted into the format required by the machine (.bmp monochrome and dithering) with the BOXLINK™ programme.

Several images in different positions can be assigned to the same unit: once the printing of one image has been completed, the unit resets to start printing the next image.



examples of prints on boxes





DIPOD overall size for Evo 2.5

## DIPOD TECHNICAL FEATURES

<b>Number of axis</b>	1 - 2
<b>Number of units that can be tooled for printing</b>	up to 2 for each transversal axis (max. 4 on one station)
<b>Printhead width</b>	140 / 280 mm
<b>Print definition</b>	180 Dpi
<b>Ink</b>	oil based, quick dry
<b>Colour</b>	standard: black other colours upon request
<b>Automatic cleaning of printheads</b>	available
<b>Print Management Images</b>	the same unit can print more than one image, by re-setting itself automatically after completing one printing
<b>Cardboard feeding speed</b>	single ink jet, low colour saturation: up to 30 m / min double inkjet, high colour saturation: up to 15 m/min
<b>Unit set-up speed</b>	up to 300 mm / sec
<b>Length of image</b>	max 3000 mm
<b>Printable box surface area</b>	no limits to the printable surface area
<b>Compatible packaging machines</b>	Evo, Nextpro

# PANOTEC®

*Headquarters*

Via G. Polese, 2  
31010 Cimadolmo (TV), Italia

T +39 0422 432715

[www.panotec.com](http://www.panotec.com)

[info@panotec.it](mailto:info@panotec.it)



*Subject to management and coordination by International Boxes Srl*

