



SOFTWARE

MANAGEMENT AND
MONITORING



PANOTEC®

SOFTWARE AND APPLICATIONS BY PANOTEC

Our software and applications meet different business needs and improve packaging operations.

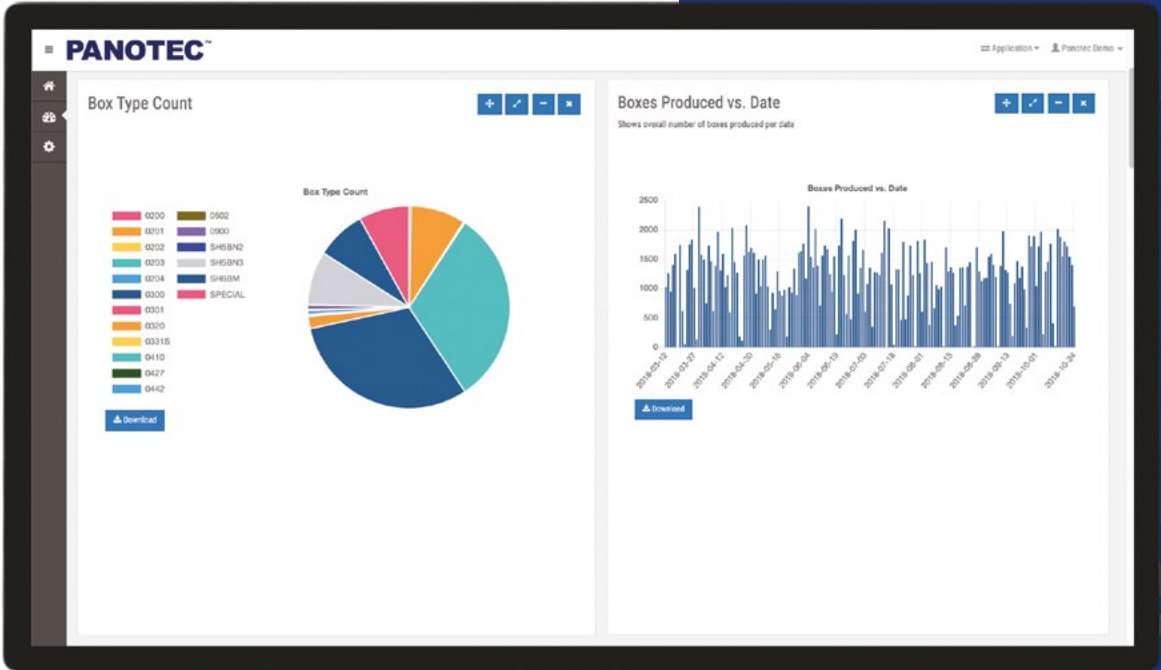
Volume optimization, machine management on site or by remote connection, integration with existing ERP management systems and the generation of detailed reports are just some of the features available for users in order to efficiently manage packaging operations.



PRODUCTION MONITORING, OPTIMIZATION AND MANAGEMENT

Exchanging information is vital to the efficiency of a production line and this is why the Software Systems by Panotec provide added value. They are user-friendly, functional tools to help supervise and optimize all workflows.

WEB REPORT



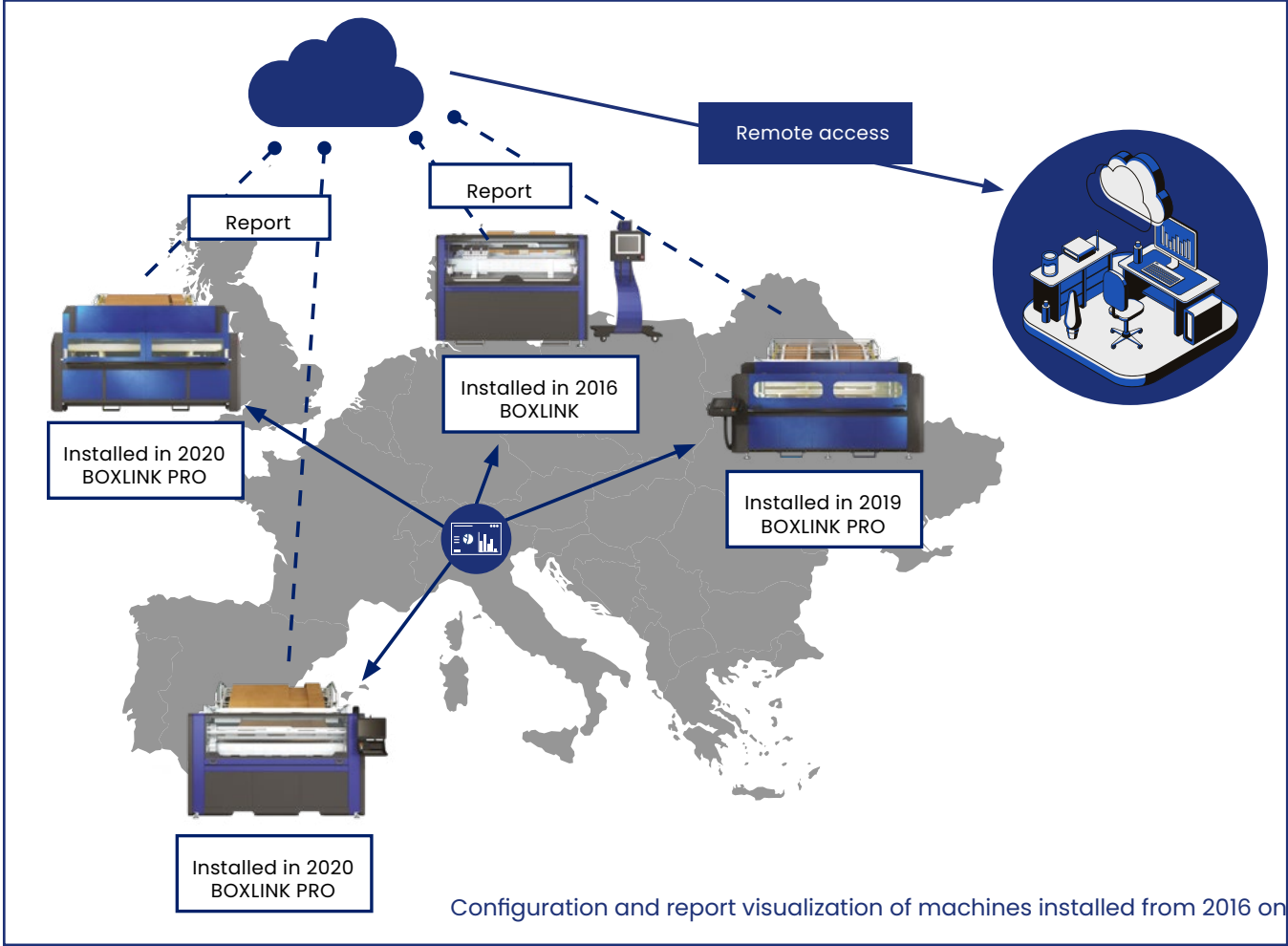
A software that controls and supervises machine performance: from cardboard consumption to daily production trends.

View and access machine utilization and output data to assess performance in real-time. Real-time output reports make it easier to take corrective action and enhance performance.

- **COST OPTIMIZATION:** cardboard use and production performance can be supervised anytime
- **EFFICIENCY:** thanks to machine/operator output monitoring, corrective actions can be taken in real-time
- **INTERFACE** clear and user-friendly
- **RECOMMENDED** for businesses operating one or more packaging machines

DATA VISUALIZATION

- Machine performance check
- Monitoring system to optimize cardboard consumption
- Cardboard consumption check
- Detection system for use of incorrect cardboard dimensions
- Machine status
- Database of produced boxes (lead times, box type, dimensions etc.)



MAIN FEATURE



Production list



List of boxes



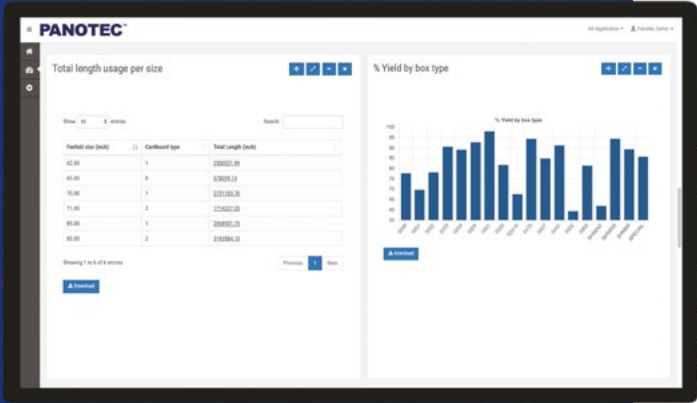
Efficiency check cardboard transformation



Recommended fanfold dimensions

Statistics modules can be positioned, changed in size, or deleted as needed.

The data of each single module can be downloaded in csv format.

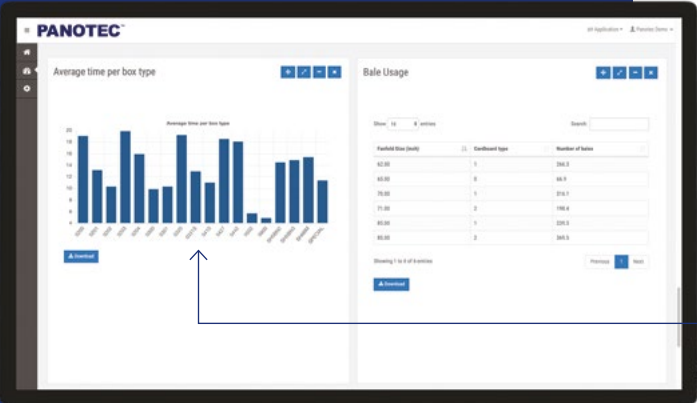


TOTAL LENGTH USAGE PER SIZE

Monitoring the use of cardboard in terms of its length, in order to optimize resources.

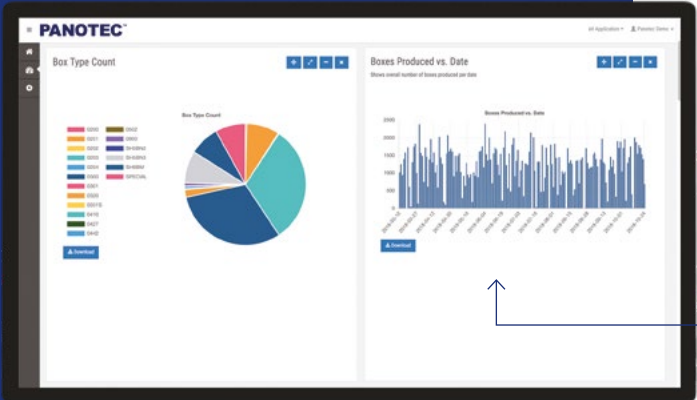
% YIELD BY BOX TYPE

Shows the output in percent for each type of box used (and therefore the difference in waste), with reference to the selected time frame.



AVERAGE TIME PER BOX TYPE

The chart states the average lead time of the machine needed to produce the boxes divided by type.

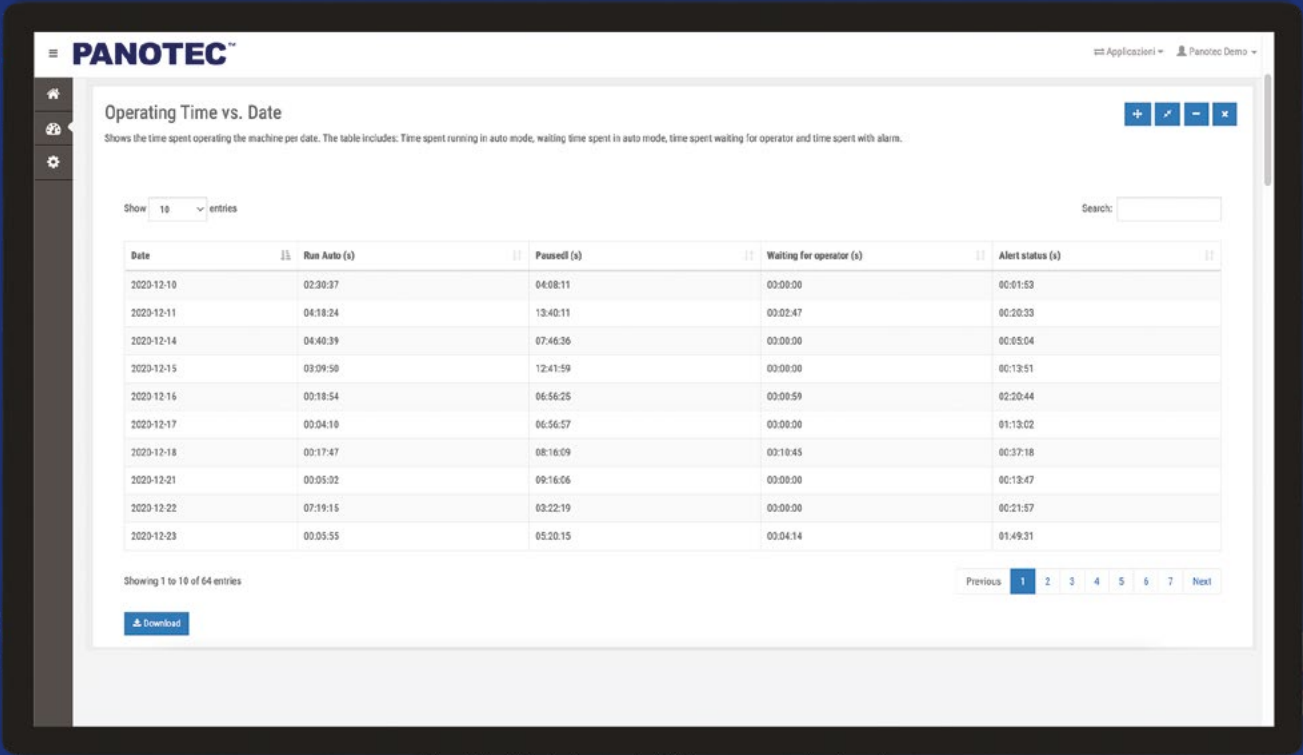


BOXES PRODUCED VS. DATE

Total numbers of boxes, produced day by day, within the selected period of time.

OPERATING TIMES VS. DAY

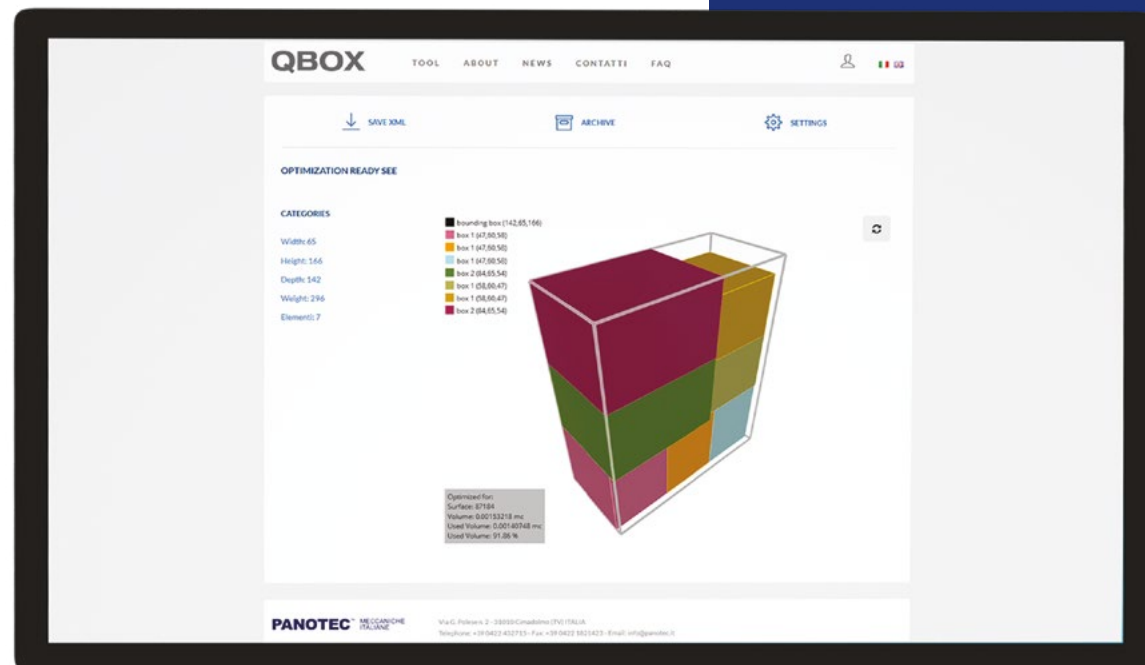
To check the total amount of effective operating hours of the machine, down times in hours or the amount of hours during which production has been interrupted due to lack of orders.



STANDARD STATISTICS FEATURES

- Boxed produced vs. date
- % Yield by fanfold width
- Box type count
- % overall yield
- Total length usage per size
- Operating time vs. date
- Average time per box type
- % Yield by box type
- Overall number of boxes produced
- Fanfold usage
- Fanfold used was not the best available

Specific statistics can also be customized or added upon request.



Volume Optimization Software to determine the most convenient position for the items inside one or more boxes based on a list of items that need to be packed together.

The software forwards the required data to produce the right-sized box directly to the packaging machine.

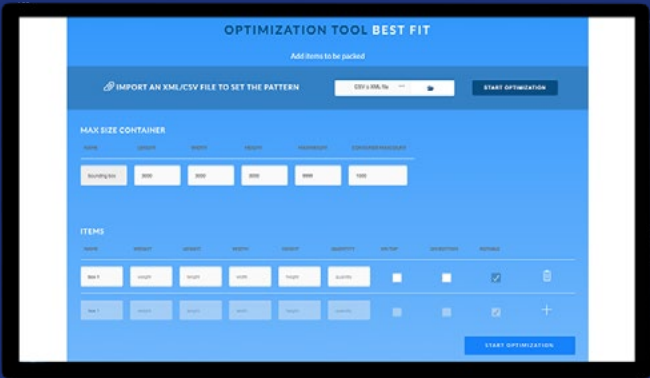
- **COST CUTTING:** using the right-sized box will minimize both the amount of cardboard used and the volumetric weight of shipments.
- **CUT BACK/ELIMINATE** void fillers
- **LOWER TRANSPORT DAMAGE RATES** due to safer positioning of the most fragile items
- **EFFICIENCY:** it selects the most suitable box for shipping and immediately transfers input data to the machine
- **INTERFACE** clear and user-friendly featuring a 3D PREVIEW of the box forming pattern
- **INTEGRATION** with the customer's OMA (Order Management System)
- **RECOMMENDED** for businesses shipping multiple items in a single packaging



OPERATING MODES

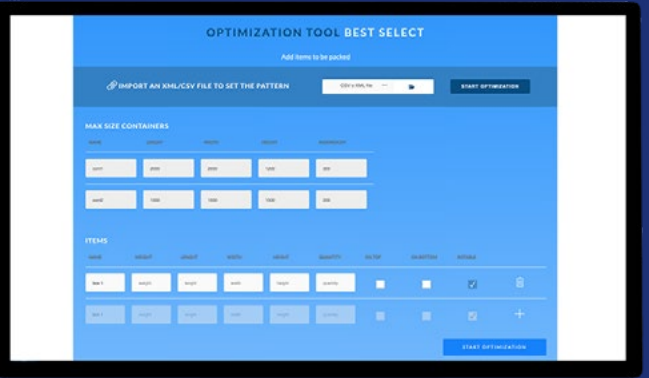
BEST FIT

Calculates the smallest and most suitable box for shipping and shows how to arrange the items inside the box.

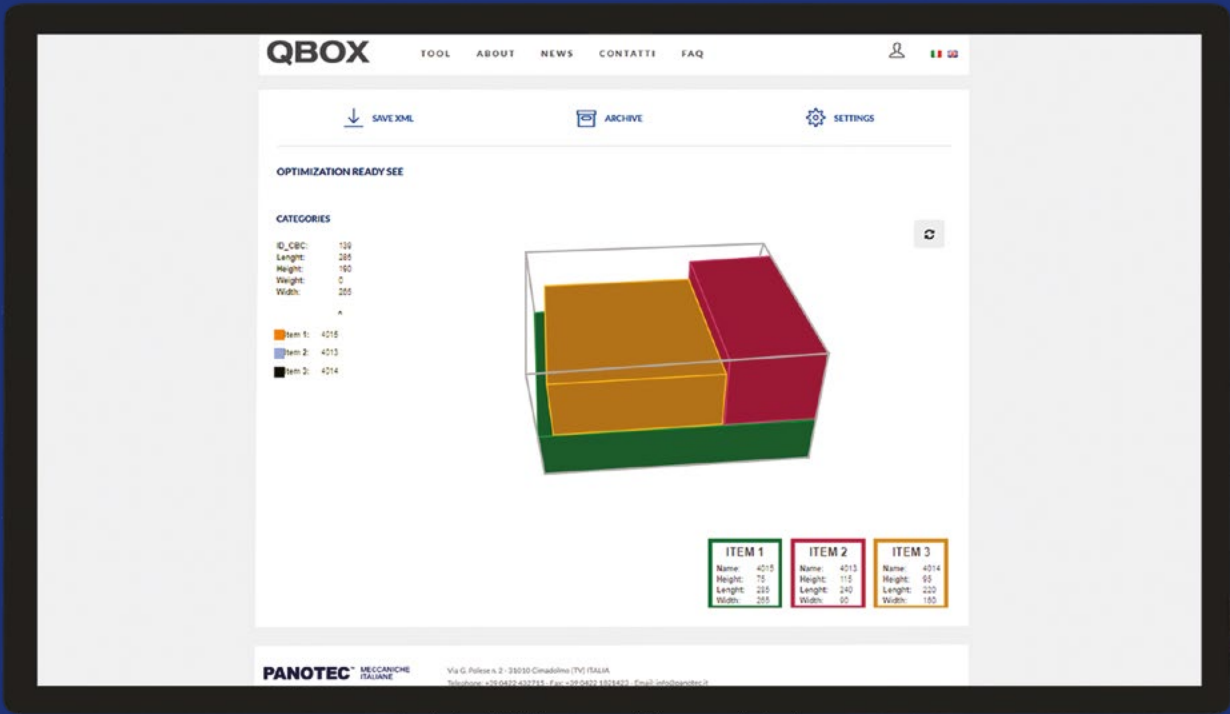


BEST SELECT

Indicates the most suitable box for shipping based on the different boxes types available.



The data to be optimized can be entered by hand or by uploading a csv file. The module to calculate and view a 3D image is also included.



Example of optimization performed with QBOX software

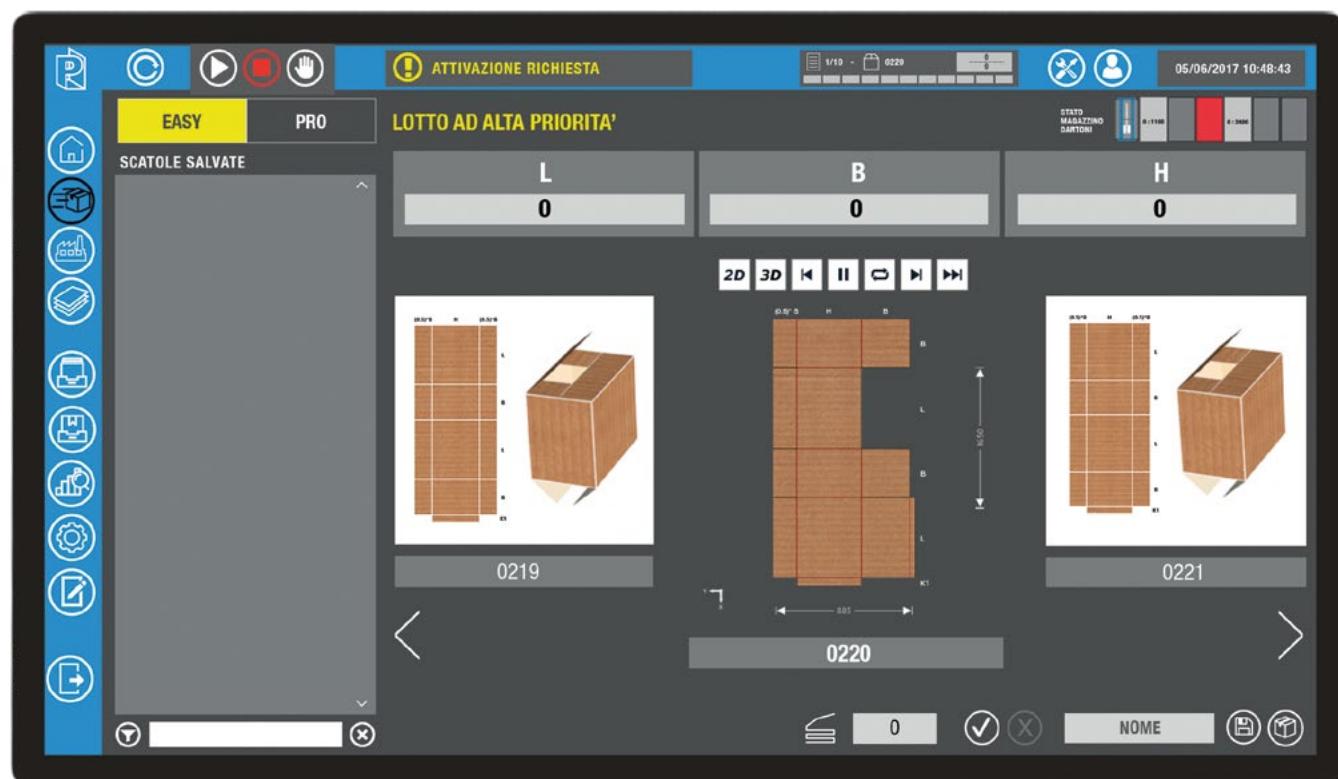
FEATURES

Thanks to QBOX software, it is possible to:

- Enter several items
- Set or lock the turn function
- Set mandatory parameters for the positioning of some products (e.g.: for fragile products it is possible to set “not on the bottom” as position parameter)
- Set the position and direction of the items
- Set maximum weight and dimensions for the single parcels

VERSIONS

- CLOUD: a specific website accessed by using your login data available for an annual fee
- STAND ALONE: QBOX is installed and set up locally at the customer’s facility with the required HW.



BOXLINK PRO

Production Management Software included on Panotec Packaging Machines.

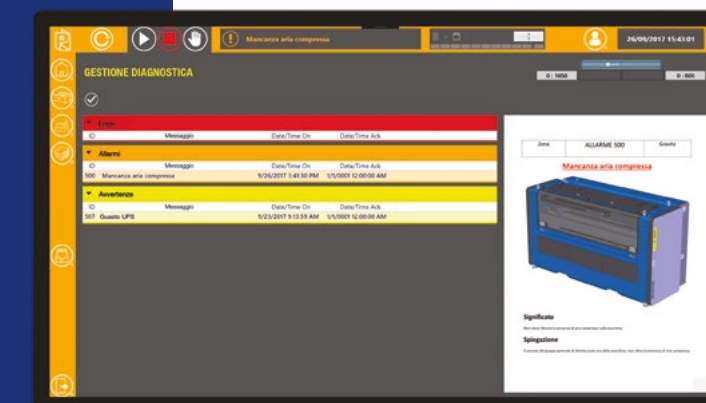
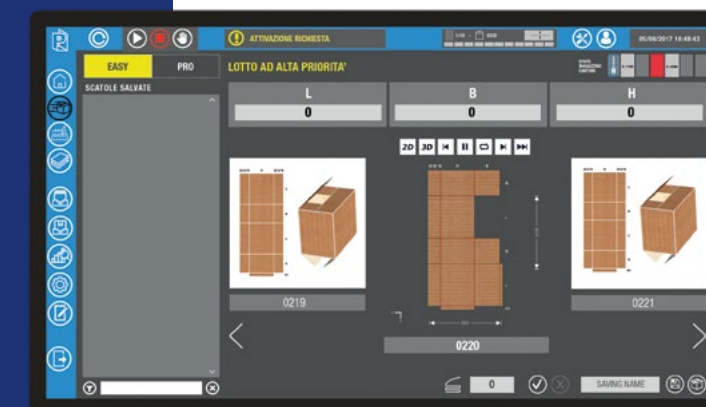
Intuitive management of production and advanced features of:

- pre-set and custom box formats
- customer box archive
- production lists to schedule production according to customer, product, time table, etc.
- connection to the company network in order to manage production from your office or via your data management system
- production reports, remote SQL queries, production data reports
- data storage of the box types
- animation of box closing
- completely customizable combo-boxes (e.g. boxes with protections)
- assisted help desk showing the solution to the anomaly

ADVANCED FEATURES

- **EASY HANDLING MODE:** enter only essential production data
- **CARDBOARD ARCHIVE,** each with its own optimized processing parameters for a simpler process and flawless fit-to-size boxes
- **3D PREVIEW:** the standard 2D and 3D preview of the boxes includes an animated box closing process. This tool is useful when new or more complex box designs are being produced
- **ONLINE SUPPORT:** associated to each alert notice. The alert details are displayed on the screen and a troubleshooting guide provides support information step by step
- **NEW COLOR CODED INDEX** in order to identify the issues that need to be solved. Alerts are classified according to three priority levels
- **MULTI-USER:** Option for setting different access levels. The software supports four authentication levels **Basic, Customer Operator, Panotec Operator, General Administrator** and therefore prevents non-authorized users from accessing advanced operating features

Available plugin:
QBOX, BoxDesigner and WEB REPORT



E-LINK

Production management and data control software, included with automatic packaging line OPERA.

A new software solution featuring a Human Centered Design. It is extremely versatile and focuses on both the software user and the embedded system.

A more user-friendly control panel significantly reduces the start-up training times, simplifies operations for skilled operators and limits the risk of operating errors.



DASHBOARD SHOWING PRODUCTION DATA AND CONSUMABLES LEVELS

The data is always available on the main page and gives an immediate overview of the line's performance.

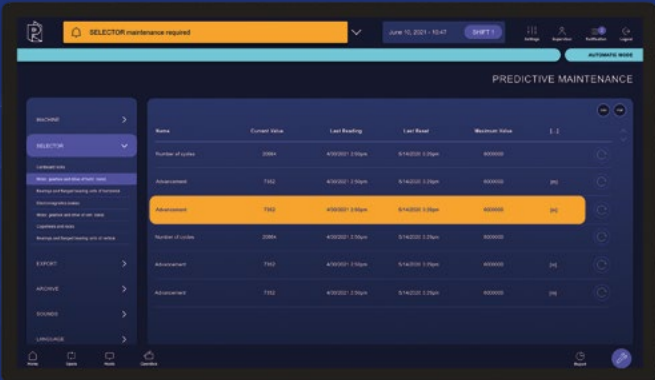


OFF-LINE PRODUCTION OF OPEN BOXES

Boxes with open lids can be produced to store fragile items that cannot be processed within the line.

HIGHLY ACCURATE SENSORS

Highly efficient production sensors that identify and help resolve issues.

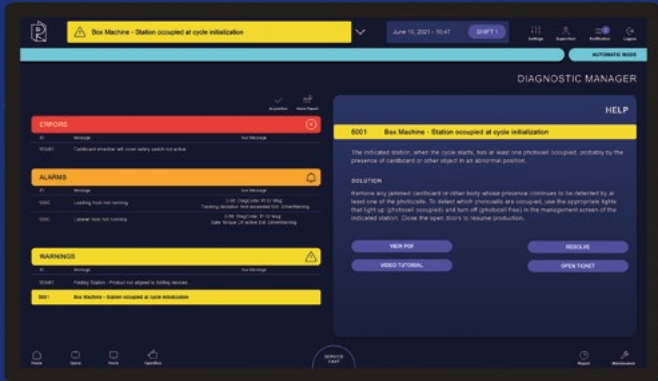


PREDICTIVE MAINTENANCE

The maintenance of the various components can be managed more effectively.

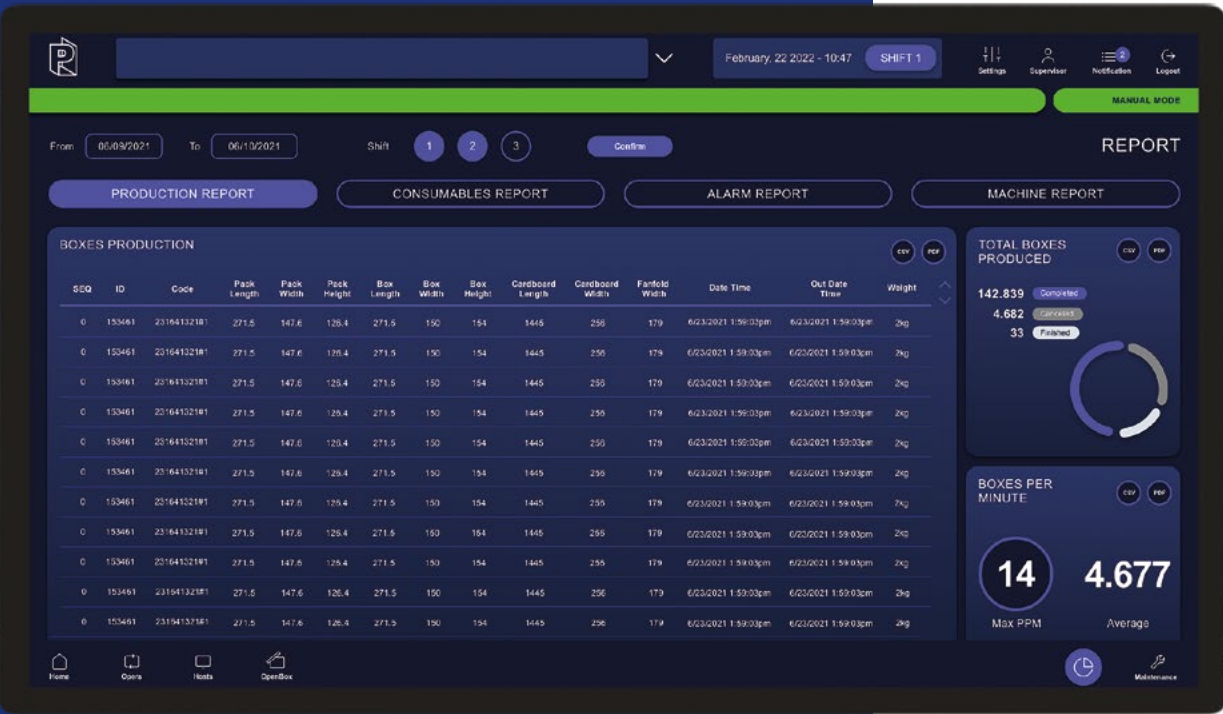
ALERTS CAN BE RESOLVED VIA PDF OR VIDEO TUTORIALS

Alerts and issues can be resolved with new pdfs, video tutorials or by opening a service ticket.

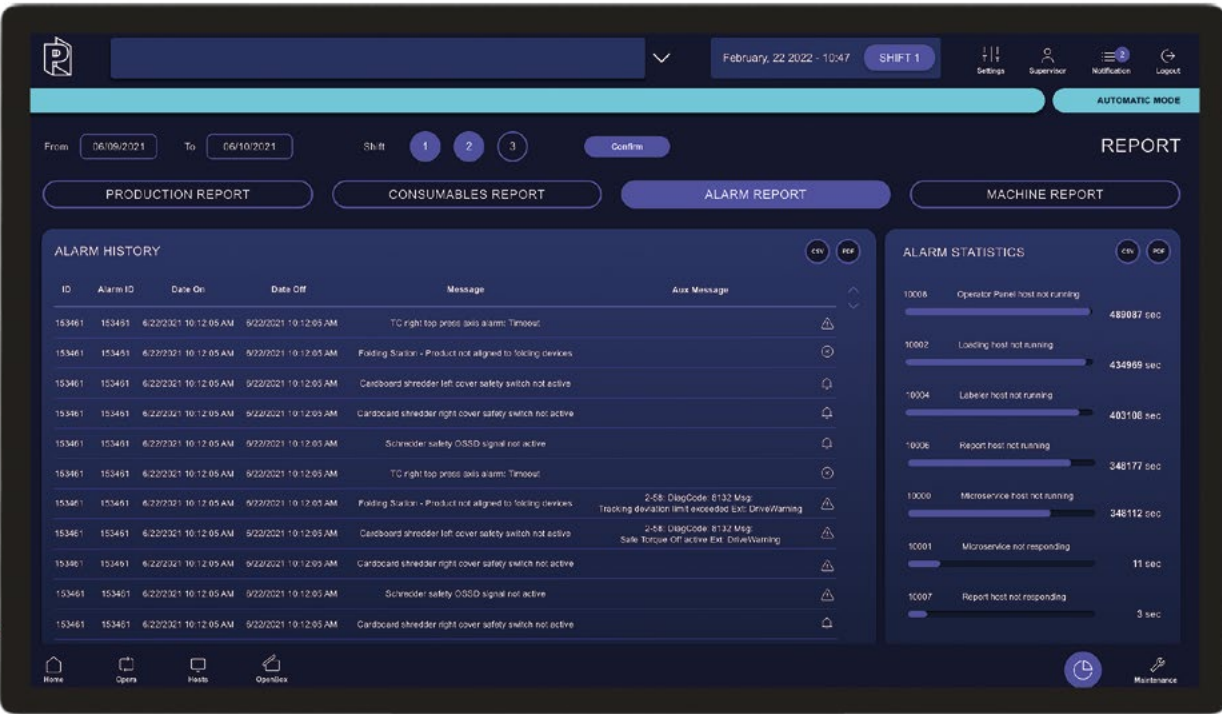


MACHINE STATUS AND PRODUCTION REPORTS

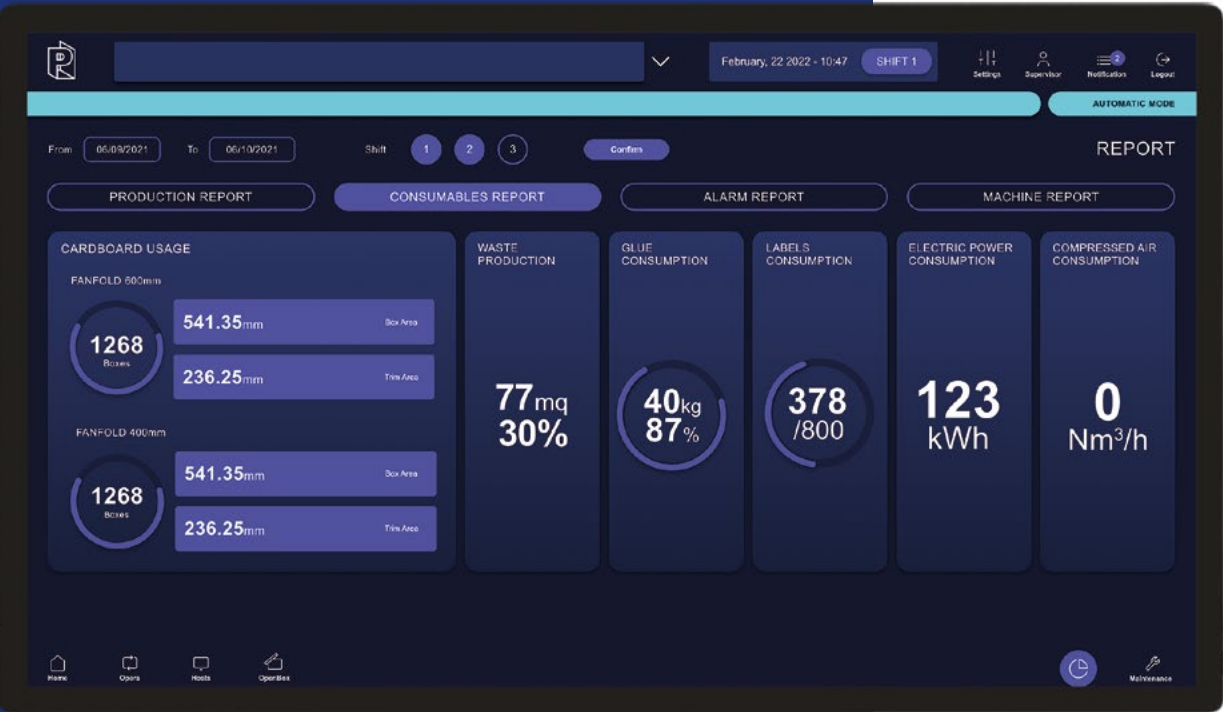
A reporting section to monitor production progress and all data related to the Opera automatic packaging line.



Production report



Alarm History



Report on consumables



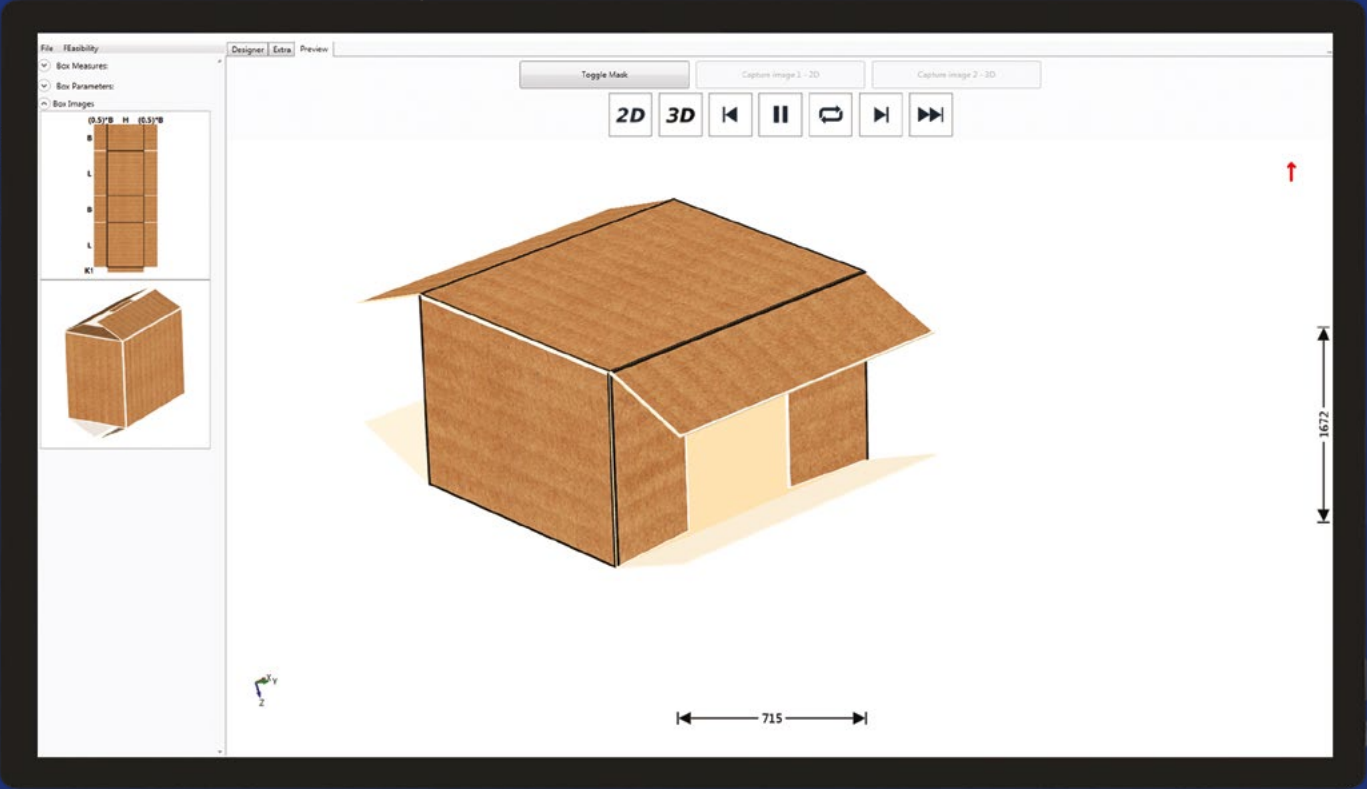
Report on Machine Performance

BOX DESIGNER

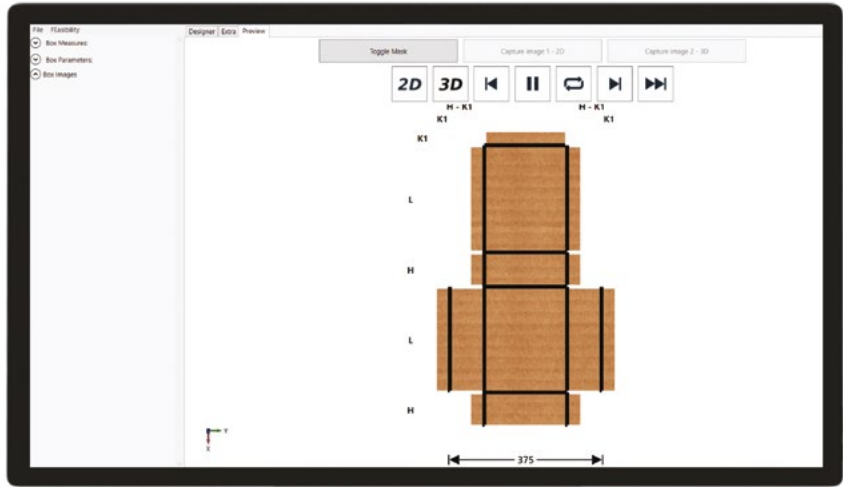
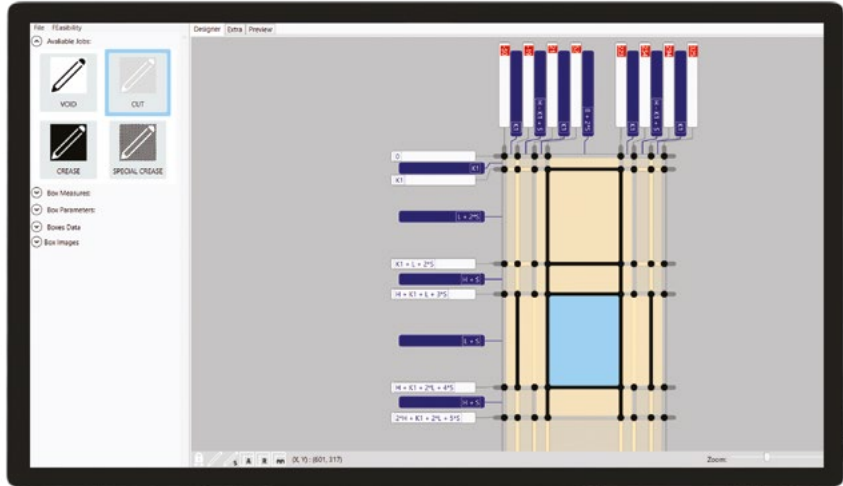
Software to create and preview your custom boxes in 3D.

OPERATING MODES/ FEATURES

- The file defining the box is saved in .xml format and can be easily modified or used to design a new box, created on the basis of a previous one.
- 3D PREVIEW: the standard 2D and 3D preview of the boxes includes an animated box closing process. This tool is useful when new or more complex box designs are being produced.
- Feasibility check of the created box: the software checks if the box can be produced with the configuration of units available in the packaging machine.



EXAMPLE OF BOX CREATION AND DISPLAY

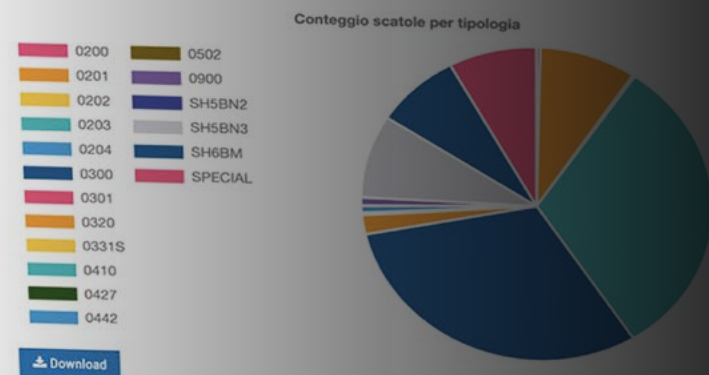


- **REDUCES/ OPTIMIZES** box production lead times thanks to the box archive
- **INTERFACE** easy and user-friendly
- **REDUCTION OF LEAD AND OPERATING TIMES** thanks to the 3D PREVIEW and closing animation



Real example

Conteggio scatole per tipologia



Tempi macchina

Mostra il tempo di utilizzo della macchina.

PANOTEC CLOUD

Cloud Computing technology safely connects packaging machines to the network and provides remote management and all advantages of remote service monitoring.

Panotec Cloud, a quick and direct connection to the Panotec community in order to help customers improve the management and efficiency of their packaging machines.

Data captured in real-time from machines is processed into valuable data to monitor and increase machine performance, cut maintenance costs and reduce downtime.

ADVANTAGES



Data Security



Reduced waiting time: an experienced remote connection technician



Monitoring and increased productivity



Cost reduction: Real-time resolution of issues

INCLUDED FEATURES:

- **Backup of machine settings**

Remote reset of machine settings based on the configuration and of the box archive in case of operational errors or technical issues requiring a reset of the machine.

Backup makes it possible to:

- Interact on the machines remotely
- Speed up the resolution of anomalies
- Restore box drawings saved in the archive

- **Predictive machine monitoring service**

A tool to supervise machine productivity and wear & tear remotely in order to forecast servicing deadlines and thus to avoid machine downtimes or operational issues.

It provides real-time reporting on the wear status of machine components. When the maximum usage value of the component is exceeded, the system sends an alarm signal to technicians, who then contact the customer to suggest maintenance work and possible spare parts.

SOFTWARE INCLUDED:

- **QBOX** - Up to 500 optimisations/day, max. 20 items per optimisation (3 months trial version)



CLOUD



CLOUD PRIME

INCLUDED FEATURES:

- **Backup of machine settings**

Remote reset of machine settings based on the configuration and of the box archive in case of operational errors or technical issues requiring a reset of the machine.

- **Predictive machine monitoring service**

A tool to supervise machine productivity and wear & tear remotely in order to forecast servicing deadlines and thus to avoid machine downtimes or operational issues.

- **2 Software updates per year, within the first 3 years**

Reduction of on-site servicing time usually needed for upgrades or machine software updates.

- **Activation of 2 new designs per year for standard or special boxes**

With this feature new standard box layouts can be activated. The box layouts can be selected from the Panotec Parametric Boxes Catalogue or the customer can provide 2 custom designs.

SOFTWARE INCLUDED:

- **QBOX** - Up to 500 optimisations/day, max. 20 items per optimisation (3 months trial version)
- **Web Report**

PANOTEC®

Headquarters

Via G. Polese, 2

31010 Cimadolmo (TV), Italia

T +39 0422 432715

www.panotec.com

info@panotec.it



Subject to management and coordination by International Boxes Srl

06/24

