



# NEXTPRO

PACKAGING  
MACHINE

**PANOTEC®**

# THE TECHNICAL EVOLUTION FOR MADE-TO-MEASURE PACKAGING

Nextpro is the perfect packaging machine for highly flexible production management and high packaging volumes.

Thanks to the automatic and independent set up, in terms of production Nextpro provides high speed, flexibility and high efficiency.



## Suitable for:

- big companies with highly efficient workflows
- high productivity requirements
- production of more than 10 boxes per minute
- production in high flexibility (batch size 1)



# TOOLS FOR CUTTING AND CREASING

Each unit is operated by its own engine to guarantee operations with high speed.

Each tool sets-up automatically thanks to the engine that is fitted on each unit to guarantee a high speed process to produce box after box.

## Transversal units



Groove cut



Standard creasing



Serrated creasing

## Longitudinal units



Pressure cut



Standard creasing



Serrated creasing

## DUAL AXIS SYSTEM

The double axis for the longitudinal cutting and creasing tools can be equipped with up to 12 cutting and creasing tools that set up independently.

## SERRATED CREASING

Creasing with perforation in addition to standard creasing: folding the cardboard is easier for the operator and the box is neat and perfect. By using the management software, you can produce boxes with both standard and serrated creasing.

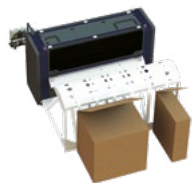
# CARDBOARD FEEDER



## AUTOMATIC LIFTER (2 TO 6 LEVELS)

2 (2CL) to 6 (6CL) cassettes for fanfold storage, in each cassette 2 fanfold stacks can be stored Side by Side (Sbs) thus doubling the available fanfold cassettes (max 12).

By using the cardboard lifter, the machine selects the most suitable cardboard width available in order to optimize cardboard consumption.



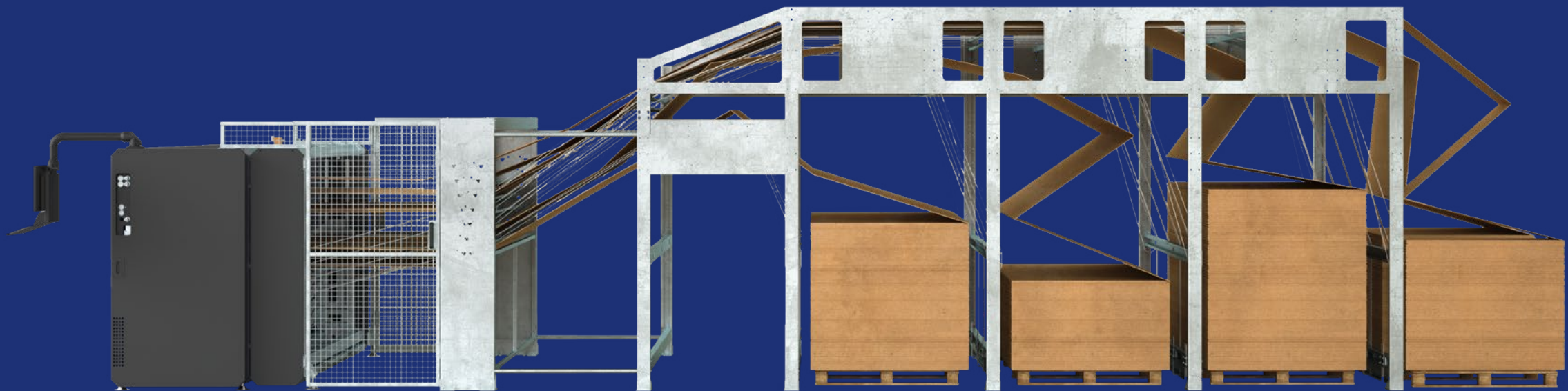
## MULTIPLE: FANFOLDS SIDE-BY-SIDE

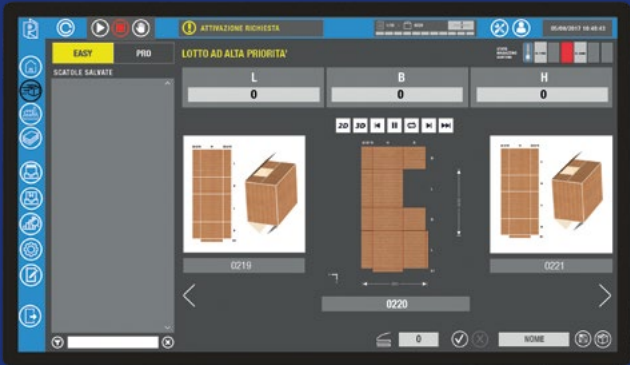
With this configuration you can use up to 4 fanfolds Side by Side (Sbs).



## SINGLE

By using the single feed system, the machine can work with a single fanfold width: max. 2500 mm / min. 400 mm.





# BOXLINK PRO

Production management software included with all packaging machines

Intuitive management of production and advanced features of:

- pre-set and custom box formats (40 models)
- customer box archive
- production lists (max 10) to schedule production according to customer, product, time table etc.
- connection to the company network in order to manage production from your office or via your data management system
- production reports, remote SQL queries, production data reports
- data storage of the box types, each with its own optimal working parameters to simplify the process and get perfect boxes every time
- animation of box closin, useful to operators in the case of new or complex models
- completely customizable combo-boxes (e.g. boxes with protections)
- assisted help desk showing the solution to the anomaly
- available plug-in: BOX DESIGNER
- compatible with Panotec Cloud Pro for QBOX and WEB REPORT

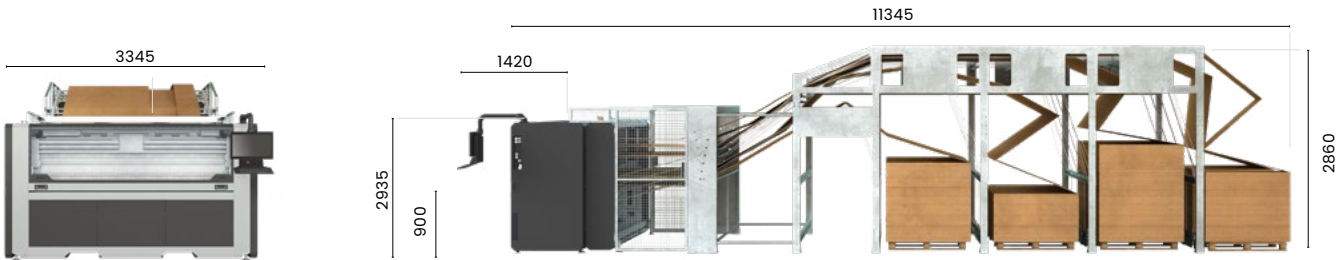
# OPTIONAL

## TRIM EXTRACTION AND CONVEYORS

- Optional includes:
- extractor to remove trim laterally
  - conveyor belt to remove trim

## SENSOR TO CHECK ON CARDBOARD

A set of photocells signal in advance that cardboard is running out.



Esempio con selettore automatico

## TECHNICAL FEATURES

Operating width	2.5 or 3.0
Operating mode	automatic
Productivity level	high
Boxes / min.	more than 10 / min
Boxes / day (batch size 1)	>1500
Boxes / day (in batches)	>3000
Feed rate	48 m / min
Cardboard feed single sheet	fanfold
Cardboard feed cassettes	up to 12 fanfold stacks
No. longitudinal units	up to 24
No. tools on trasversal units	up to 3
Creasing	standard / serrated
Cardboard waste management	available
Cardboard thickness	2 mm to 7 mm
Min. length open box	380 mm
Electrical connections	400V / 50Hz (European) - 480V / 60Hz (USA)
Power supply	10kVa
Compressed air	min 6 bar (max consumption 117 NI/min)
Software	Boxlink PRO
Software Boxdesigner™	included

# PANOTEC®

*Headquarters*  
Via G. Polese, 2  
31010 Cimadolmo (TV), Italia

T +39 0422 432715  
[www.panotec.com](http://www.panotec.com)  
[info@panotec.it](mailto:info@panotec.it)

