



# EVO

PACKAGING  
MACHINE



**PANOTEC®**

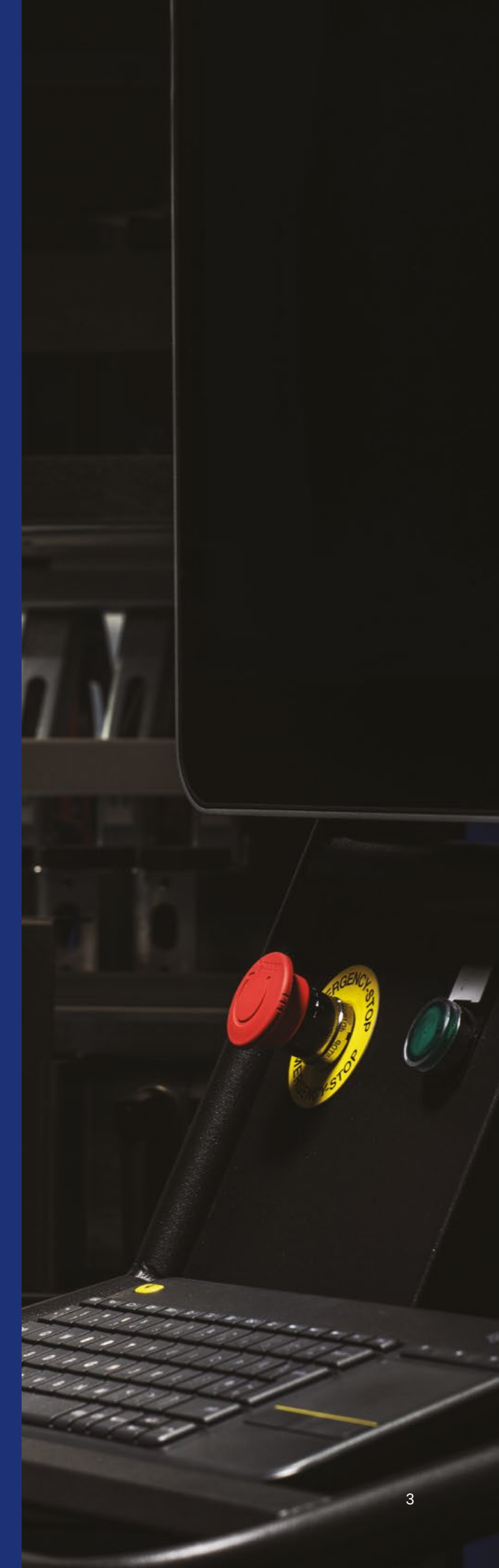
# THE NEXT GENERATION OF INNOVATION

Evo is a packaging machine of the latest generation, created by the departments of research and development, the electrical and software department with 30 years of experience.  
Designed for easy, low-cost maintenance and low noise levels.



## Suitable for:

- medium to big sized enterprises
- medium-high productivity requirements
- more than 4 boxes per minute
- production in batches or in high flexibility (batch size 1)





# TOOLS FOR CUTTING AND CREASING

## Completely automated positioning of the units

Evo is equipped with 1 transversal unit and up to 12 longitudinal units  
Each unit can be equipped with different kinds of tools and it sets up automatically.

### Transversal units



Groove cut



Standard creasing



Standard and serrated creasing

### Longitudinal units



Pressure cut



Standard creasing



Standard and serrated creasing

## CONTROL PANEL

### CONTROL PANEL ON A PIVOTING ARM

The panel is installed on a pivoting arm rotating around itself and around the machine (180°). It is fitted on eye-level thus comfortable to use allowing the operator to manage the control panel and the machine operations at the same time.

The computer included is an industrial PC, suitable to be used in working environments subject to temperature changes, high levels of humidity, dust and corrosion.

## CARDBOARD FEEDER



### AUTOMATIC LIFTER (2 TO 6 LEVELS)

Evo can be equipped with 2 (2CL) to 6 (6CL) cassettes for fanfold storage, in each cassette 2 fanfold stacks can be stored Side by Side (SbS) thus doubling the available fanfold cassettes (max 12).  
By using the cardboard lifter, the machine selects, the most suitable cardboard width available in order to optimize cardboard consumption.



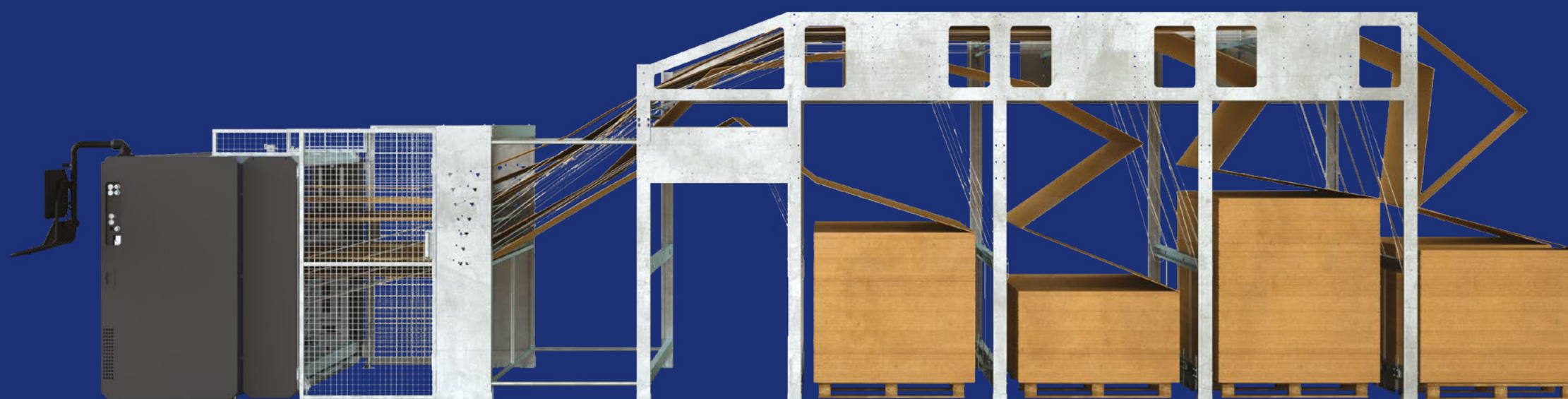
### MULTIPLE: 2 FANFOLDS SIDE-BY-SIDE

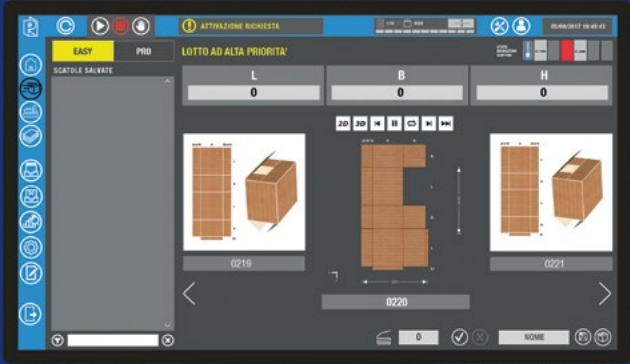
With this configuration you can use 2 to 3 fanfolds Side by Side (SbS).



### SINGLE

The machine can work with single cardboard sheets (F) or with one fanfold stack (ICL) or with both.  
Dimensions of the cardboard:  
max 2500 mm, min 400 mm





# BOXLINK PRO

Production management software included with all packaging machines

Intuitive management of production and advanced features of:

- pre-set and custom box formats (40 models)
- customer box archive
- production lists (max 10) to schedule production according to customer, product, time table etc.
- connection to the company network in order to manage production from your office or via your data management system
- production reports, remote SQL queries, production data reports
- data storage of the box types, each with its own optimal working parameters to simplify the process and get perfect boxes every time
- animation of box closin, useful to operators in the case of new or complex models
- completely customizable combo-boxes (e.g. boxes with protections)
- assisted help desk showing the solution to the anomaly
- available plug-in: BOX DESIGNER
- compatible with Panotec Cloud Pro for QBOX and WEB REPORT

## OPTIONAL

### SERRATED CREASING

Creasing with perforation in addition to standard creasing: folding the cardboard is easier for the operator and the box is neat and perfect.

### TRIM EXTRACTION AND CONVEYORS

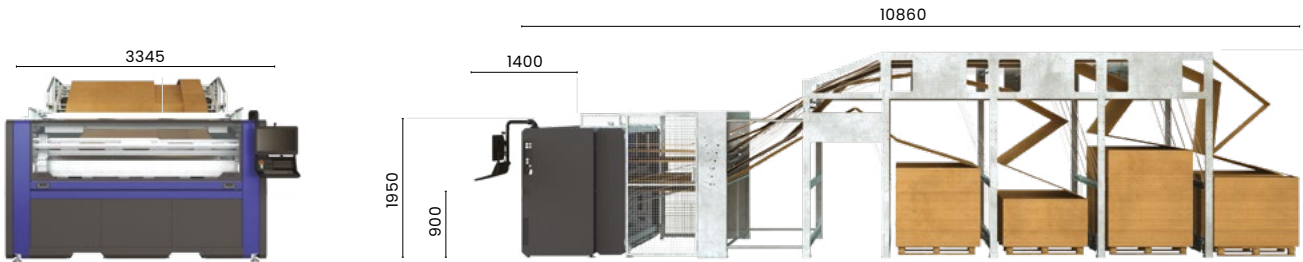
Optional includes extractor to remove trim laterally and conveyor belt to remove trim.

### SENSOR TO CHECK ON CARDBOARD

A set of photocells signal in advance that cardboard is running out.

### DOUBLE DRIVER

2nd positioning unit automatic longitudinal units, in addition to the standard one (reduces the time of repositioning).



Esempio con selettore automatico

## TECHNICAL FEATURES

Operating width	2.5
Operating mode	automatic
Productivity level	medium / high
Boxes / min.	more than 4 / min
Boxes / day (batch size 1)	500 - 1000
Boxes / day (in batches)	1000 - 1500
Feed rate	45m / min
Cardboard feed single sheet	fanfold / single sheets
Cardboard feed cassettes	up to 12 fanfold stacks
No. longitudinal units	1 to 12
Creasing	standard / serrated
Cardboard waste management	available
Cardboard thickness	2 mm to 7 mm
Min. length open box	420 mm
Electrical connections	400 V / 50Hz (European) - 480V / 60Hz (USA)
Power supply	4 - 7.2 kW
Compressed air	min 6-7 bar (max consumption 115 NI/min)
Software	Boxlink PRO
Software Boxdesigner™	available



# PANOTEC®

Headquarters  
Via G. Polese, 2  
31010 Cimadolmo (TV), Italia

T +39 0422 432715  
[www.panotec.com](http://www.panotec.com)  
[info@panotec.it](mailto:info@panotec.it)



*Subject to management and coordination by International Boxes Srl*

